

DCMEA HS COUNTY BAND AUDITION SCALES

2008 Revision

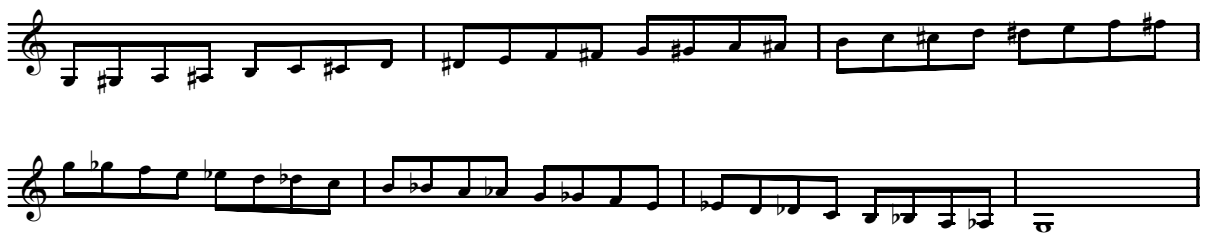
EUPHONIUM - treble clef transposition

The scales written below are transposed for the convenience of the player. The concert scale name is listed first, the scale name in *italics> is the transposed key. All euphoniums will play the *same pitched* scales. For example, if the scale requested for Euphoniums is F, this means F concert, and those students using the treble clef transposition will play the scale notated "F (*G*)" below.*

♩ = 120



Chromatic



All scales must be memorized - no scale music/materials are allowed in the audition room.

All students should be prepared to perform all scales tongued AND slurred.